

DAN DRYER

BABY CHANGE TABLE

Robust Construction
Scandinavian Aesthetic
Wall Mounted



**Enhanced User
Experience**

Provides parents and caregivers with a safe, clean and comfortable space to change babies.

**Durability for
High Traffic Areas**

Designed to withstand constant use in environments like malls, airports, hospitality venues, and healthcare facilities.

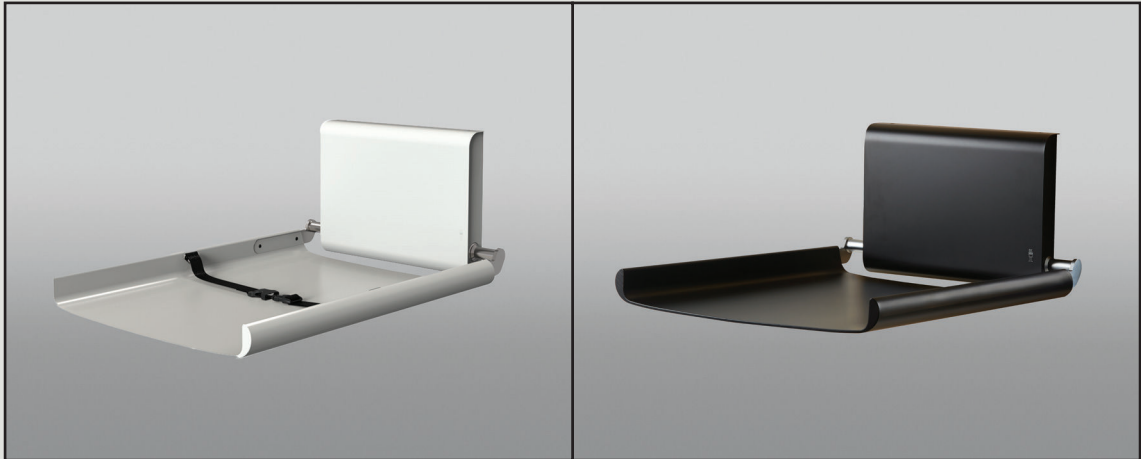
**Low
Maintenance**

Easy-to-clean materials reduce the need for intensive cleaning and lower long-term upkeep costs.

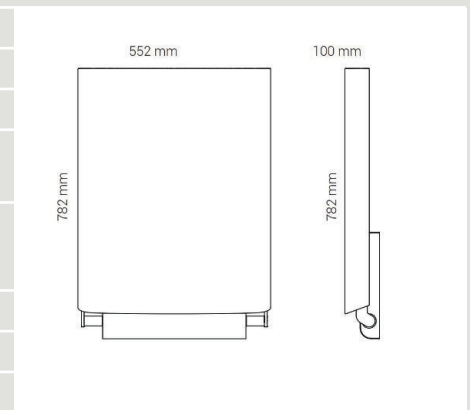
**Improved Hygiene
& Safety**

Hygienic materials and compliance with safety regulations protect users and reduce liability for facility managers.

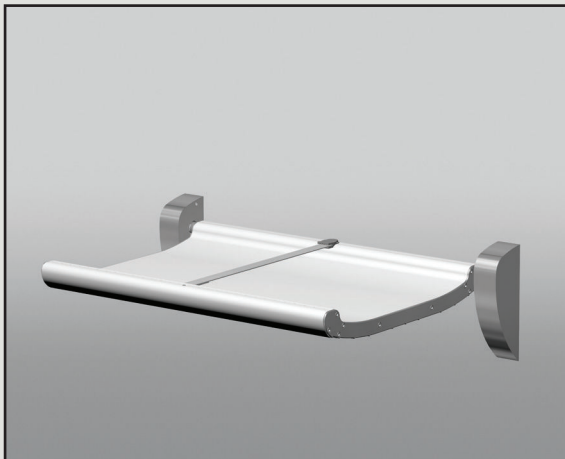
Vertical



Colour	Matte Black, White
Load Support	Up to 80kgs
Safety Belt	Included
Unit Weight	17kg (net)
Material	Powder coated aluminium profile and electro-galvanised steel axle and levers
Dimensions	552W x 782H x 100D mm (closed) 552W x 322H x 751D mm (open)
Standards	Complies with EN12221-1 +A1 TUV Cert
Fixing	Not included
Warranty	12 months
Product Code	DDBCVB (black) DDBCWV (white)



Horizontal



Colour	White
Load Support	Up to 400kgs
Safety Belt	Included
Unit Weight	17kg (net)
Material	Aluminium and brushed stainless steel
Dimensions	967W x 782H x 100D (closed) 269H x 626D mm (open)
Standards	Complies with EN12221-1 +A1
Fixing	Not included
Warranty	12 months
Product Code	DDBCHW

