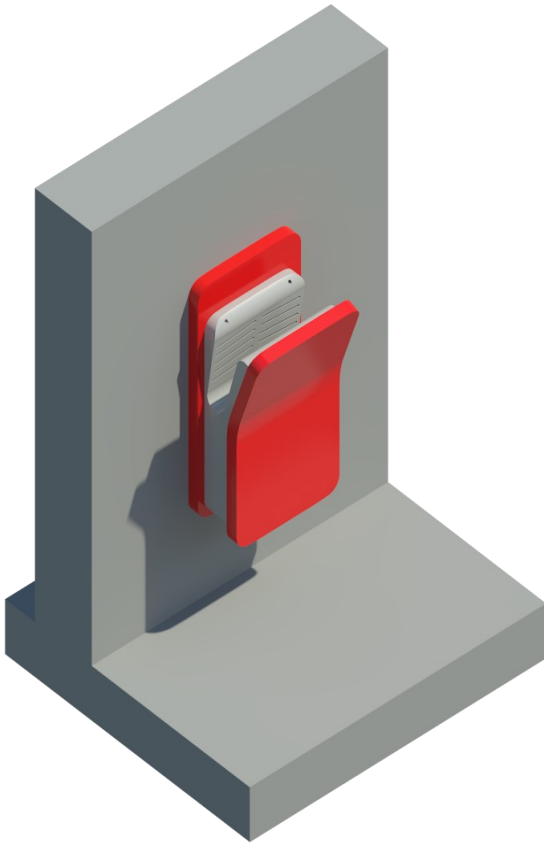


TECHNICAL DATA

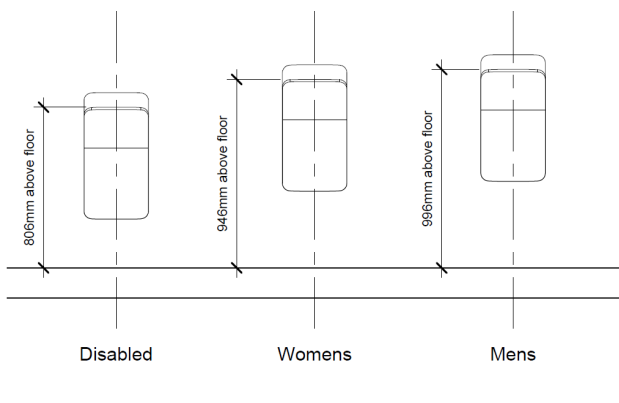
ffuuss

Automatic Hand Dryer 1.1KW



Height recommendations

Male washrooms	996mm above the floor
Female washrooms	946mm above the floor
Disabled persons	806mm above the floor



MODEL
SFF-PHW, SFFPH-PG, SFFPH-BM

Motor	Universal Vacuum brushed 23,000RPM
Element	Nil, fitted with preheat
Sound Levels	70dBA@1.5m
Power	1100W
Rating	5 amps @ 240V AC IPX2
Switching	Make or break infrared
Max Airflow	73 L/s
Cover	ABS, Antimicrobial treated
Dimensions	635H x 320W x 250D mm
Warranty	36 month limited warranty
Standards	Complies with New Zealand and Australian Standards

SAMPLE SPECIFICATIONS

ffuuss

General

Scope—Supply and install ffuuss dryers as shown on the plans.

Materials

Primary Materials— ffuuss Air Hug Hand Dryer colour finish as per specifications.

Workmanship

Using the mounting template supplied, position the mounting bracket and affix to the wall using the appropriate fixing for the type of wall.

The electrical connection can be made by fixed wiring of the correct cross section back to an isolation switch in a convenient location all as per local electrical codes of practice.

Hook top of dryer on to mounting bracket, rock dryer left and right until the machine clicks into place hard against the wall.

Completion

Pass over warranties/manuals to the principal. Give maintenance instructions to principal.

We reserve the right to alter specifications and design without prior notice

SPL

premium washroom products

PO Box 437, Cambridge 3450, New Zealand
Tel: +64 7 823 5790 | Fax: +64 7 823 5792

Email: office@splwashrooms.co.nz | Web: www.splwashrooms.co.nz

supreme
hand dryers